



**MASSES / MISAS**  
**Saturdays / Sábados**  
8AM & 5:15PM

**Sundays / Domingos:**  
7AM, 9AM, 11AM, & 6PM  
1PM & 7:30PM  
(Spanish/Español)

**Weekdays / Días de la Semana**  
8AM (English/Ingles)

**Holy Days / Días Santos**  
8AM, 11:30AM (School), 6:30PM,  
8PM (Spanish/Español)

**RECONCILIATION**  
**CONFESIONES**

Friday / Viernes  
(Bilingual/Bilingüe):  
7PM to 9PM

Saturday / Sábado:  
3:30PM to 5PM

**ADORATION**  
**ADORACIÓN**

Thursday / Jueves  
9AM to 6PM

2350 Winchester Blvd.  
Campbell, CA 95008  
(408) 378-2464

fax (408) 378-5548

Email: [stlucyparishoffice@dsj.org](mailto:stlucyparishoffice@dsj.org)

[Facebook: SaintLucyParish](https://www.facebook.com/SaintLucyParish)

[Twitter @StLucyCampbell](https://twitter.com/StLucyCampbell)

**St. Lucy Parish School**  
(408) 871-8023  
[www.stlucyschool.org](http://www.stlucyschool.org)

**SVDP/Outreach Services**  
**Servicios Sociales**  
(408) 378-8086

**The mission of Saint Lucy Parish is to lead people to a transformative relationship with Jesus Christ and the Catholic Church. We live our faith by welcoming and serving.**

***La misión de la Parroquia de Santa Lucía es guiar a la comunidad a una relación transformadora con Jesucristo y la Iglesia Católica. Vivimos nuestra fe en el servicio y al dar la bienvenida.***



**A  
NOTE  
FROM  
OUR  
PASTOR**

© J. S. Paluch Co., Inc.

The Jubilee Year of Mercy has come to an end, the doors have been closed and we now celebrate the end of our Liturgical Year with the Feast of Christ the King. It has been a year of many blessings as we renewed our call to be a people of mercy, forgiveness and compassion. Each month, we have looked at one of the Spiritual or Corporal Works of Mercy and in these final days we look at two more Corporal Works: Feeding the Hungry and Giving drink to the Thirsty.

Both of these works of mercy are easily done. The challenge we all share is as we do these works: What does our heart do in response to the hungry and thirsty? Many people will take time to serve at Thanksgiving Day kitchens and meals or share generously with food banks and other organizations during this season of giving. We as Christians are asked to go one step further in our service. Yes, sharing the bounty of our lives is important but we are also called to share our compassion in seeking out and praying with and for the hungry and thirsty. *It is the moment when we are called to see the presence of Jesus in those whom we feed and give drink to in an action of service knowing that we serve Jesus.* (Mt 25 31:44) (Continued page 5...)

**Notas  
del Párroco**



© J. S. Paluch Co., Inc.

El Año Jubilar de la Misericordia ha llegado a su fin, las puertas han sido cerradas y ahora celebramos el fin de nuestro Año Litúrgico con la Fiesta de Cristo Rey. Ha sido un año de muchas bendiciones al renovar nuestro llamado a ser un pueblo de misericordia, perdón y compasión. Cada mes, hemos mirado una de las Obras Espirituales o Corporales de la Misericordia y en estos últimos días vemos otras dos Obras Corporales: Alimentando a los hambrientos y dando de beber a los que tienen sed.

Ambas obras de misericordia son fáciles de hacer. El desafío que todos compartimos es como hacemos estas obras: ¿Qué hace nuestro corazón en respuesta a los hambrientos? Muchas personas tomarán tiempo para servir en las cocinas del Día de Acción de Gracias o compartir generosamente con alimentos durante esta temporada. A los cristianos se les pide que avancemos un paso más en nuestro servicio. Sí, compartir la generosidad de nuestras vidas es importante, pero también estamos llamados a compartir nuestra compasión en buscar y orar con y para los hambrientos. Es el momento en que somos llamados a ver la presencia de Jesús en aquellos a quienes alimentamos en una acción de servicio sabiendo que servimos a Jesús. (Mt 25 31:44) (Continúa en la página 5...)

## Welcome

We welcome visitors and newcomers to St. Lucy Parish. We encourage new parishioners to register as parish members and become active in our parish community. Registration forms are available outside the Church, at our Parish Office and on our Web Site.



## Bienvenidos

Le damos la bienvenida a los visitantes y recién llegados a la Parroquia de Santa Lucía. Invitamos a los nuevos feligreses a registrarse como miembros de la parroquia y participar activamente en nuestra comunidad parroquial. Los formularios de inscripción están disponibles afuera de la Iglesia, en la oficina parroquial y en nuestro sitio Web.

**Parish Office Hours**  
**Horario de Oficina Parroquial**  
Monday - Thursday / *Lunes a Jueves*  
9AM - 6PM  
Friday / *Viernes* 9AM - 5PM  
Sunday / *Domingo* 10AM - 1PM

**SVDP/Outreach Services**  
**Oficina de Servicios Sociales**  
(408) 378-8086  
Office Open: 10AM - 11:45AM Mon - Fri  
**Horario de Oficina: 10 AM-11:45AM**  
*Lunes a Viernes*

## Prayer

**Prayer Shawl Ministry:** If you are ill or otherwise in need of comfort, we would love to offer you a shawl/lap throw we have crocheted/knitted in prayer. [stlucyprayershawl@dsj.org](mailto:stlucyprayershawl@dsj.org)

**St. Lucy's Prayer Chain:** If someone is sick or out of work or in need of some sort of healing, contact us at [stlucysprayerchain@gmail.com](mailto:stlucysprayerchain@gmail.com), or telephone Rose @ 408/378-1276 (non-English speaking call 408/378-2464).

**ADORATION:**  
**Every Thursday: 9AM - 6PM, Benediction 5:45**  
**Prayer For Vocations: 3:15 - 4:15 PM**  
Also, every First Saturday: 6:30 - 7:30 PM.  
**Pro-Life Rosary: 5:15 PM**

## Oración

**Ministerio de Mantón de Oración:** Si está enfermo o necesita consuelo, nos encantaría ofrecerle un mantón para sus oraciones. Envíe correo a [stlucyprayershawl@dsj.org](mailto:stlucyprayershawl@dsj.org)

**Cadena de Oración de Santa Lucía:** Si alguien está enfermo o fuera del trabajo o necesita un tipo de curación, póngase en contacto con nosotros a [stlucysprayerchain@gmail.com](mailto:stlucysprayerchain@gmail.com), o por teléfono Rose al 408-378-1276 (Español al 408-378-2464).

**ADORACIÓN:**  
**Todos los jueves 9AM a 6PM, Bendición: 5:45**  
**Adoración por las Vocaciones: 3:15 a 4:15 PM**  
Cada primer sábado del mes: 6:30 - 7:30 PM  
**Rosario para la Vida: 5:15 PM**

*Las Tarjetas de Adoración son para que las entreguen a la persona por las que oran en la Adoración.*

## PARISH STAFF PERSONAL PARROQUIAL

### Pastor/Párroco

Rev. Mark Arnzen  
(408) 378-2464 x 106, [marnzen@dsj.org](mailto:marnzen@dsj.org)

### Parochial Vicar/Vicario Parroquial

Rev. Steve Kim  
(408) 378-2464, x 105, [skim@dsj.org](mailto:skim@dsj.org),

### Pastoral Associate, Spanish / Asociado Pastoral, Español

Antonio Ojeda  
(408) 378-2464 x 107, [aojeda@dsj.org](mailto:aojeda@dsj.org)

### Pastoral Associate, English / Asociado Pastoral, Ingles

Andrew Brown  
(408) 378-2464 x 101, [abrown@dsj.org](mailto:abrown@dsj.org)

### Director of Children's Faith Formation / Directora de Formación de Fe para Niños

Irma Alarcón de Rangel  
(408) 378-2464 x 102, [ialarconderangel@dsj.org](mailto:ialarconderangel@dsj.org)

### Coordinator of Youth Ministry & Evangelization / Coordinadora del Ministro de la Juventud y Evangelización

Patty Osorio  
(408) 378-2464 x 103, [posorio@dsj.org](mailto:posorio@dsj.org)

### Principal of the School /Directora de la Escuela

Sue Grover  
(408) 871-8023, [principal@stlucyschool.org](mailto:principal@stlucyschool.org)

### Parish Administrator / Administrador de la Parroquia

Raymond Langford  
(408) 378-2464 x 110, [rlangford@dsj.org](mailto:rlangford@dsj.org)

### Accounting / Contabilidad

Sandy Hart  
(408) 378-2464 x 110, [shart@dsj.org](mailto:shart@dsj.org)

### Office Manager / Gerente de Oficina

Maricela Gallarate  
(408) 378-2464 x 118, [mgallarate@dsj.org](mailto:mgallarate@dsj.org)

### Communications Coordinator / Coordinadora de Comunicaciones

Ericka Tibke  
(408) 378-2464 x 115, [etibke@dsj.org](mailto:etibke@dsj.org)

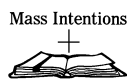
### Administrative Assistants/ Secretarias

Ingi Ibarra  
(408) 378-2464 x 114, [iibarra@dsj.org](mailto:iibarra@dsj.org)  
Yvonne Franco  
(408) 378-2464 x 114, [yfranco@dsj.org](mailto:yfranco@dsj.org)  
Erika Alcaraz  
(408) 378-2464 x 104, [ealcaraz@dsj.org](mailto:ealcaraz@dsj.org)

## Mass Intentions/Intenciones de la Misa

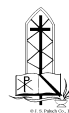
**November 21 - November 27**  
**21 de Noviembre - 27 de Noviembre**

Monday/Lunes	8AM	Angeline "Ann" Lagone +
Tuesday/Martes	8AM	Emmett Foley +
Wednesday/Miércoles	8AM	Peg Reilly +
Thursday/Jueves	9AM	People of the Parish
Friday/Viernes	8AM	Rodrigo Ding Alaura Jr. +
Saturday/Sábado	8AM	Januaría Echavía
	5:15PM	Joseph Ackler +
Sunday/Domingo	7AM	Ofelia Pintero Samonte +
	9AM	People of the Parish
	11AM	Milagros Mahinay +
	1PM	Raudelito Tadeo +
	6PM	Virginia Balahadia +
	7:30PM	Juana Gonzalez +



## PRESIDERS NEXT WEEKEND CELEBRANTES PARA EL PROXIMO FIN DE SEMANA

5:15 PM	Saturday/Sábado	Fr. Mark Arnzen
7:00 AM	Sunday/Domingo	Fr. Steve Kim
9:00 AM	Sunday/Domingo	Fr. Mark Arnzen
11:00 AM	Sunday/Domingo	Fr. Steve Kim
1:00 PM	Sunday/Domingo	Fr. Mark Arnzen
6:00 PM	Sunday/Domingo	Fr. Steve Kim
7:30 PM	Sunday/Domingo	Fr. Mark Arnzen



## NOVEMBER 27TH READINGS LECTURAS PARA EL 27 DE NOVIEMBRE

### First Sunday of Advent Primer Domingo de Adviento

**1st Reading/1ª lectura:**  
Isaiah/Isaías 2:1-5  
**Responsorial Psalm/Salmo:**  
Psalm/Salmo 122:1-9  
**2nd Reading/2ª lectura:**  
Romans/Romanos 13:11-14  
**Gospel/Evangelio:**  
Matthew/Mateo 24:37-44



## READINGS FOR THE WEEK LECTURAS DE LA SEMANA

Monday/Lunes: Rv/Ap 14:1-3, 4b-5; Ps 24:1bc-4ab, 5-6; Lk/Lc 21:1-4  
 Tuesday/Martes: Rv/Ap 14:14-19; Ps 96:10-13; Lk/Lc 21:5-11  
 Wednesday/Miércoles: Rv/Ap 15:1-4; Ps 98:1-3ab, 7-9; Lk/Lc 21:12-19  
 Thursday/Jueves: Rv/Ap 18:1-2, 21-23; 19:1-3, 9a; Ps 100:1b-5; Lk/Lc 21:20-28; Thanksgiving Day/Día de Acción de Gracias: Sir 50:22-24; Ps 145:2-11; 1 Cor 1:3-9; Lk/Lc 17:11-19  
 Friday/Viernes: Rv/Ap 20:1-4, 11 -- 21:2; Ps 84:3-6a, 8a; Lk/Lc 21:29-33  
 Saturday/Sábado: Rv/Ap 22:1-7; Ps 95:1-7ab; Lk/Lc 21:34-36

## Please Pray for the Sick: Oremos por los Enfermos:

Trinidad Valle

## Please Pray for the Deceased: Oremos por los Fieles Difuntos:

Angela Petrucci      Sharlee Blow      Barbara Casey  
 Luis Americano      Ofelia Pintero      Silviano Rojas

**SACRAMENT OF BAPTISM:** First and third Saturday of each month at 9:15 am. Visit [stlucy-campbell.org](http://stlucy-campbell.org) for registration information at least 2 months in advance.

**SACRAMENT OF MATRIMONY:** The couple must contact the Parish Office at least 6 months in advance to begin Marriage Preparation.

**RITE OF CHRISTIAN INITIATION OF ADULTS (RCIA):** For adults inquiring about or preparing to become member of the Catholic Church, contact our Parish Office at 378-2464.

**SACRAMENTO DE BAUTISMO:** Primer y tercer sábado de cada mes a las 10:15 am. Visite la oficina con 2 meses de anticipación para obtener los formularios de inscripción.

**SACRAMENTO DE MATRIMONIO:** La pareja debe comunicarse con la Oficina Parroquial con 6 meses de anticipación para comenzar Preparación para el Matrimonio.

**RITO DE INICIACION CRISTIANA DE ADULTOS (RICA):** Para adultos que desean ser miembros de la Iglesia Católica o recibir sacramentos, comunicarse con la Oficina de la Parroquia al 378-2464.

## Collection / Colecta

The offertory collection for November 13th totaled \$18,480. Second Collection for Religious Education: \$1,978.  
 La colecta del ofertorio del 13 de Noviembre fue de \$18,480. Segunda Colecta para Educación Religiosa: \$1,978.

**The Second Collection scheduled for next weekend is for the St. Lucy's St. Vincent de Paul Outreach.**  
**La segunda colecta para el próximo domingo es para la Oficina de Servicios Sociales de Santa Lucía.**

Make your giving easier with ParishPay secure electronic giving. Sign-up online at [www.parishpay.com](http://www.parishpay.com) or by calling 1-866-727-4741 (5am-9pm, 7 days a week)

**ParishPay**  
 Making it Easier to Give™

Haga su donación más fácilmente con ParishPay (entrega electrónica segura). Regístrese en línea con [www.parishpay.com](http://www.parishpay.com) o llamando al 1-866-727-4741 (5 am-9 pm, 7 días a la semana)

## Schedule of Events / Calendario de Eventos


This schedule is subject to change. For the most current schedule please visit [www.stlucy-campbell.org](http://www.stlucy-campbell.org)  
 Este calendario está sujeto a cambios. Para encontrar la versión actualizada de este calendario, visite [www.stlucy-campbell.org](http://www.stlucy-campbell.org)



Monday <i>Lunes</i>	Tuesday <i>Martes</i>	Wednesday <i>Miércoles</i>	Thursday <i>Jueves</i>	Friday <i>Viernes</i>	Saturday <i>Sábado</i>	Sunday <i>Domingo</i>
11/21/2016	11/22/2016	11/23/2016	11/24/2016	11/25/2016	11/26/2016	11/27/2016
				THANKSGIVING DAY OFFICE CLOSED	OFFICE CLOSED	

Music Practice for Adoration 3PM Church	Walking with Purpose Ministry 8AM PAC-A	Discipulos, Grupo Matinal 9:30AM PAC-B	Bilingual Thanksgiving Day Mass 9AM Church	Girl Scout Brownie Troop #62089 3PM Lally	Advent Preparation 9AM Church	Coro de Niños: "Amigos de Jesus y Maria" Practice 11AM Annex
Organ Practice 6PM Church	Vietnamese Prayer Group 2:30PM Church	Coro de Niños: "Amigos de Jesus y Maria" - Guitar Practice 5:30PM PAC-C	Legion of Mary 7PM PAC-B	Discipleship Meeting 5PM PAC-C	Quinceañera 12PM Church	Cameroon Mass Celebration 3PM Annex
Grupo de Oración - Choir Practice 7PM Church	11AM Mass Choir Practice 7PM Church	Novena with Rosary 6PM Church	7:30PM Spanish Mass Lector Practice 7:30PM Church	Bilingual Confessions 7PM Church	Bilingual Confessions 3:30PM Church	"With One Voice" Choir Practice 4PM Church
RICA 7PM PAC-A	High School Sacramental Preparation-Year 2 7PM PAC	"The Chosen Teens of God" Choir 6:15PM PAC-C		Grupo de Oración 7PM Church	Choir Practice (5:15PM Mass) 4:30PM Church	LifeTeen 6PM PAC
EDGE 7PM Lally		Grupo de Oración - Intercedores 7PM PAC-C		Despertar Juvenil 7PM Lally	Our Lady of Guadalupe Play Practice 7PM Church	
Bear Den Meeting 7PM Annex						
Despertar Juvenil 7PM Conference Room						

Parish Office will be **CLOSED** Thursday and Friday, Nov. 24th & 25th in observance of Thanksgiving



*La oficina parroquial estará **CERRADA** Jueves y Viernes, 24 y 25 de noviembre en observación de la Fiesta de Acción de Gracias*

MARK YOUR CALENDAR	
<b>Our Lady of Guadalupe Vigil</b>	Sunday, December 11, 2016
<b>Feast of Our Lady of Guadalupe</b>	Monday, December 12, 2016
<b>Feast of St. Lucy</b>	Tuesday, December 13, 2016
<b>Christmas Concert</b>	Wednesday, December 14, 2016

*St. Lucy Presenta*



*Posadas Navideñas*



COMIENZA A LAS 6:30 PM

SÁBADO, 17 DE DICIEMBRE

\*Comenzara afuera de la iglesia

TENDREMOS VILLANCICOS NAVIDEÑAS, COMIDA, Y PIÑATAS!!!



Evento es GRATIS



**(Pastor's Notes Continued from page 1)**

We ask: Do I share my time, talent and treasure to sooth my conscience or do I share out of love for God and neighbor? If it is the latter than we will hear these beautiful words of blessing, *'Well done, good and faithful servant! You have been faithful with a few things; I will put you in charge of many things. Come and share your master's happiness!'* (Mt 25:21)

Let our practice of mercy continue to reach out to others in God's love. **God Bless, Fr. Mark**

---

**(Notas del Párroco, continuado de la pagina 1)**

Preguntamos: ¿Comparto mi tiempo, talento y tesoro para calmar mi conciencia o comparto por amor a Dios y al prójimo? Si es lo último, escucharemos estas bellas palabras de bendición, *"Muy bien, servidor bueno y honrado; ya que has sido fiel en lo poco, yo te voy a confiar mucho más. Ven a compartir la alegría de tu Señor."* (Mt 25:21) Que nuestra práctica de misericordia continúe llegando a otros en el amor de Dios.

**Que Dios los bendiga, El Padre Mark**

---

**THANKSGIVING DAY MASS (Bilingual)**

November 24, 2016 at 9AM

You may bring food to be blessed during the mass.

**THANKSGIVING DAY PRAYER**

All powerful God,  
We appeal to your tender care  
That even as you temper the winds and rains  
To nurture the fruits of the earth  
You will also send upon them  
The gentle shower of your blessing.  
Fill the hearts of your people with gratitude,  
That from the earth's fertility  
The hungry may be filled with good things  
And the poor and needy proclaim the glory of your name.  
We ask this through Christ our Lord.  
AMEN



---

**MISA DEL DIA DE ACCION DE GRACIAS (bilingüe)**

24 de Noviembre, 2016 a las 9AM.

Podrán traer alimentos para ser bendecidos durante la misa.

**ORACION DEL DIA DE ACCION DE GRACIAS**

*Dios Todopoderoso,  
Apelamos a Tu tierno cuidado  
Que a medida que moderas los vientos y las lluvias  
Para nutrir los frutos de la tierra  
También envíes sobre ellos  
La suave lluvia de Tu bendición.  
Llena los corazones de Tu pueblo con gratitud,  
Que a raíz de la fertilidad de la tierra  
Los hambrientos sean satisfechos con buenos frutos  
Y los pobres y necesitados así proclamen la gloria de Tu nombre.  
Te lo pedimos por Cristo nuestro Señor.  
AMEN*

## Adult Faith Formation

**Young Adults:** Sunday, December 4<sup>th</sup> from 2pm-6pm join the Young Catholic Professionals at their St. Joseph the Worker Retreat:

**ST. JOSEPH THE WORKER  
RETREAT**  
— DECEMBER 4<sup>TH</sup>, 2016 —

*"Joseph, by the work of your hands  
and the sweat of your brow,  
you supported Jesus and Mary,  
and had the Son of God as your fellow worker.  
  
Teach me to work as you did,  
with patience and perseverance, for God and  
for those whom God has given me to support."*

**Upcoming Faith Formation Parent Sessions:**

Sunday, 11/20, Session #4: Teachings of Jesus part II", 10:05am in the PAC

Wednesday, 12/14 ,Session #6: "Mary Mother of God part II"- 4pm in the PAC

ST. NICHOLAS, ST. WILLIAM, &  
ST. THOMAS AQUINAS PARISHES PRESENT:

# EXALT

Worship + Message + Adoration

ALL PARISHES WELCOME!



6:15pm Hospitality,  
7pm XLT begins

## December 4

Our Lady of the Rosary Church  
3233 Cowper St, Palo Alto, CA 94306

RSVP TO [CMARDESICH@DSJ.ORG](mailto:CMARDESICH@DSJ.ORG)

**SPEAKER:**



**WORSHIP:**



**HOST:**



**SEEKERS  
RETREAT**  
Saturday, January 28, 8:00am - 12noon  
**ST LUCY PARISH**  
FREE ADMISSION. REGISTER TODAY  
408-379-5900 or [Abrown@dsj.org](mailto:Abrown@dsj.org)

*"It is Jesus that you seek  
when you dream of  
happiness; He is waiting for  
you when nothing else you  
find satisfies you"*  
- St. John Paul II

## Children's Faith Formation / Formación de Fe para Niños

### CHRIST THE KING

This Sunday is the Feast of Christ The King, the Solemnity of Our Lord Jesus Christ, King of the Universe, which mark the end of the Liturgical Year.

The next Sunday, we will start a brand new Liturgical Year with the First Sunday of Advent. Advent is the season encompassing the four Sundays (and weekdays) leading up to the celebration of Christmas. The Catholic Church invites us to live the rhythm of the liturgical year in order to help us walk into a deeper encounter with the Lord Jesus.

Children in the catechesis will start learning about the Liturgical Year and Advent in their sessions. The beauty of the Liturgical Seasons can be most deeply grasped when the families come to celebrate Mass and bring home so enriching traditions, such as making an Advent Wreath to light a candle for every Sunday of Advent or placing a Nativity Scene under the Christmas tree.

Please remember, Christ is King! Jesus Christ is meant to become the Lord of our whole lives, and inform the very pattern of how we live them.



### CRISTO REY

Este domingo es la Fiesta de Cristo Rey, la Solemnidad de Nuestro Señor Jesucristo, Rey del Universo, que marca el final del Año Litúrgico. El próximo domingo, comenzaremos un nuevo año litúrgico con el primer domingo de Adviento. Adviento es la temporada que abarca los cuatro domingos (y los días de la semana) que conducen a la celebración de la Navidad. La Iglesia Católica nos invita a vivir el ritmo del año litúrgico para ayudarnos a entrar en un encuentro más profundo con el Señor Jesús.

Los niños de la catequesis comenzarán a aprender sobre el Año Litúrgico y el Adviento en sus sesiones. La belleza de las temporadas

Litúrgicas se capta más profundamente cuando las familias vienen a celebrar la Misa y traen a casa tradiciones tan enriquecedoras como son el hacer una Corona de Adviento para encender una vela por cada Domingo de Adviento ó colocar un Nacimiento bajo el árbol de Navidad.

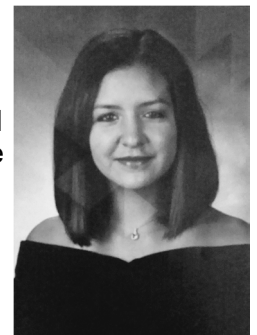
¡Recuerde, Cristo es Rey! Jesucristo está destinado a ser el Señor de toda nuestra vida, y a regir el patrón mismo de cómo la vivimos.

## Teen Faith Formation / Formación de Fe para Adolescentes

### Saints in the City

St. Lucy's will be participating in the second annual Saints in the City awards put on by the Diocese of San Jose. This banquet "is an opportunity for the leaders of the Diocese of San Jose to honor our youth who have carried the torch of discipleship with fearless faith, enduring hope and bountiful charity. Each parish and high school selects one youth as their 2016 honoree. We recognize each of these young heroes and honor their commitment to the Great Commission and their eager response to the New Evangelization at the November 10 banquet.

As youth minister at St. Lucy Parish I am deeply honored and privileged to have nominated Karen Duran as our Saint Teresa Award nominee. Karen deserves this award because she has found a way to combine her love for children, music and God and turned them into a wonderful ministry. Karen has been sharing her musical talents (she plays three different instruments) with the church since sixth grade. Here at St. Lucy she started a Spanish-singing teen choir which she herself directs, plays and sings with. Last year she co-directed our summer music camp which led to a jump in interest for children to join our church choirs. Being an active parish member Karen has seen the needs of St. Lucy and



has helped whenever possible. Her performance skills have also helped her with her four years as a leader for our Vacation Bible Camp. She has been able to spread God's joy with the kids leading both the music and the theatrical portions of camp. This Leigh High school student loves to let her light shine any time she's needed. Whenever we've asked for help to lead the prayer and worship portion of our children's faith formation retreats Karen has always agreed to do it (*as seen pictured here on left*). Through song she hopes to teach children how easy and fun it can be to pray to our Father. It's wonderful to see a talented and smart young lady using her assets towards the good of the Church. I pray that Karen will continue to grow in her faith and that she's able to use her music to lead us all in prayer and spiritual melodies. I ask that you please keep Karen and her family in your prayers and that you help us in recognizing this future Saint.



# ST. LUCY PARISH CHRISTMAS BASKET PROGRAM 2016



We are called to help those who are less fortunate. It is with great joy in our hearts that we announce our Christmas St. Vincent de Paul/Outreach Program.

The **Christmas Food Basket Program** is a long-standing tradition at St. Lucy Parish. Each basket provides the food for a complete Christmas dinner. Families who receive Christmas Baskets come from St. Lucy Parish or reside at the Sobrato Family Living Center.

Non-perishable food for the Christmas Baskets will be collected from

## Saturday, November 19<sup>th</sup> through Sunday, December 11<sup>th</sup>

All St. Lucy Parishioners are encouraged to bring non-perishable food to Mass and place them in the baskets at the entrances to the Church. **Please check the expiration date before you donate. We cannot use any food that has been opened, spoiled, or damaged or is past its expiration date.** All food donated will be accepted, excluding any home-canned products i.e. preserves, etc. We try to make each basket identical except for quantities that are based on family size.

### NON-PERISHABLES NEEDED:

Yams/Sweet Potatoes - 15 oz. can	Sugar – 4 or 5 lb. bag	Jello/Pudding - 6 oz. box (large size)
Cranberry sauce - 16 oz. can	Cake Mix - 18 oz. box	Stuffing – 6 oz. box
Vegetables - 15 oz. can	Frosting - 12 oz. can	Dried Mashed Potatoes – 12-16 oz. box
Fruit - 15 oz. can	Flour - 5 lb. bag	Dried Beans – 2 lb. bag
Hominy – 6 lb. can	Rice - 2 lb. bag	

### PERISHABLES NEEDED: We put the following perishable items in each Christmas Basket.

Eggs (12-18)    Butter (1 lb.)    Ham (5 lb. can)    Bone in Ham (6-8 lbs)    Turkey (10-12 lbs.)

**To provide funds towards the purchase of perishables and other food items** - Make checks payable to St. Lucy Conference, St. Vincent de Paul, and leave your check at the Parish Office, put it in a Sunday collection basket or leave it at the Outreach Office by **Monday, December 12<sup>th</sup>**.

**If you wish to purchase perishables yourself**, please call the Outreach Office at 408-378-8086 by **Monday, December 12<sup>th</sup>**, and leave your name and phone number, along with what you will be donating. Deliver the perishables that you have pledged to the St. Lucy School gym on **Friday, December 16<sup>th</sup>** between 3:00 – 6:00 p.m.

**Do you want to volunteer to be part of this program?** Call the Outreach Office at 408-378-8086. Please leave your name and phone number and what you want to do.

### You can help in the following ways:

**After each Weekend Mass from November 19th through December 11th** - Move food from the collection baskets at the entrances of the Church to the Flower Room behind the Altar

**Mondays from November 22nd thru December 12th** – Move food from the Flower Room to the Container in the Parking Lot - Moving food starts after 8 am Mass.

**Thursday, December 15th starting at 8:00 am** – Assemble boxes and set-up the school gym. We will need people with pickups & vans to help move the food from the Container to the gym

**Friday, December 16th between 3:00 – 6:00 pm** - Receive perishable donations at the gym

**Saturday, December 17th from 8:00 am – noon** - Fill and distribute Christmas Baskets

If you know of a St. Lucy family or are a St. Lucy family that is in need of a Christmas Food Basket, please call us at 408-378-8086. You will be asked to come to the Outreach Office between **November 14th and December 9th** to sign-up for a Christmas Food Basket. The Outreach Office is open Monday through Friday from 10:00 – 11:45 a.m.

### Feast of Saint Lucy: December 13

St. Lucy Feast Day will be celebrated on December 13th, with a special Mass at 11:30 AM. Bishop McGrath will preside with Fr. Mark and Fr. Steve concelebrating. **We are hoping to collect prescription eyeglasses that are not being used.** These eyeglasses will go to our local Lion's Club, who will refurbish the glasses and donate them to those in need. Please place the eyeglasses in the boxes in the back of the church.



### Fiesta de Santa Lucía: 13 de diciembre

La Fiesta de Santa Lucía se celebra el 13 de diciembre, con una misa especial a las 11:30 AM con el Obispo McGrath. **Estamos recolectando lentes de vista.** Les daremos los lentes al Club de Leones local, que va a restaurarlos y donarlos a los que los necesitan. Por favor, traiga sus lentes y dépositelos en las cajas en la parte posterior de la iglesia.







# GIVING TREE 2016

## Saturday, November 19<sup>th</sup> thru Sunday, December 18<sup>th</sup>



There will be Giving Trees located at the exits of the Church. Some of the tags/ornaments on the trees are for presents that will be given to HomeFirst for gifts for the homeless men, women and families that reside in their shelters and housing units. Some of the tags/ornaments will be for teens staying at the Bill Wilson Center. Other tags will be for grocery gift cards that will be placed in the Christmas Baskets of the needy families from St. Lucy Parish or used during the year at the food pantry operated by the St. Lucy Conference of St. Vincent de Paul for the Parish. The Payless Shoe, and Dollar Tree gift cards, rain ponchos and other items will be given to our homeless Outreach clients in January.

After purchasing a gift, please place it in one of the boxes near the Giving Trees. The organizations that we deliver your gifts to have requested that we deliver your gifts **unwrapped**. We suggest that you do not wrap your gifts but place them in a paper bag and attach your tag/ornament to the handle of the bag or directly on the gift.

**Gift Cards, Gift Certificates and Grocery Scrip** – Suggested amount \$10 - \$25 maximum. Please note the amount of the Gift Card and include activation receipt. Place cards, certificates or scrip in an envelope addressed to St. Lucy's St. Vincent de Paul Conference, and deposit them in the regular Sunday Mass collection baskets.

**Please do not put gift cards in Giving Tree boxes.**

### Suggested Gifts

Most Requested	Gift Cards (\$10-\$25)	Household	Clothing
Adult Backpack	Safeway, Grocery Outlet	Towel Set	Socks, Multipack
Outdoor Sleeping Bag	Dollar Tree	Dish Set (4-6)	Underwear (All Sizes)
Sweat Pants (All sizes)	Target, Wal-Mart	Set of Eating Utensils	Thermal underwear
Sweat Shirts (All sizes)	Subway, Burger King, KFC	Sheets (Twin, Full, Double)	Glove and hat sets
Sleeping Bag Liner	Mc Donalds, Pollo Loco	Yoga Mat	Payless Shoes (\$35)
First Aid Kit, Flashlight	Lucky, Food Maax	Blankets (Twin, Full/Double)	Rain Poncho

**Do you want to volunteer to be part of this program?** Call the Outreach Office at 408-378-8086. Please leave your name and phone number and what you want to do. **You can help in the following ways:**

**After each Weekend Mass from November 26th through December 18th** - Move presents from the Giving Tree Boxes at the entrances of the Church to the Flower Room behind the Altar

**Mondays from November 28th thru December 19th** – Move presents from the Flower Room to PAC for sorting, bagging and delivery to Shelters - Moving of presents starts after 8 am Mass.

**Sunday, December 11th and Sunday December 18th from 2:30 pm to 4:00 pm** – Help sort and bag gifts in the Flower Room of the Church

We wish to thank the students of the St. Lucy School, and the St. Lucy Parish Catechism students for making our gift tags/ornaments.



### Christian Service

Pack 330 Cub Scouts and Troop 62168 Junior Girl Scouts from our Parish came together on Thursday, November 10, 2016 for Operation Christmas Child Drive by Samaritan Purse and packed 50 shoe boxes with soft toys, jump ropes, toy cars, puzzles, stationeries and essential toiletries to be shipped to kids in need in various parts of the world. This drive was a great success and thought our kids the act of giving.

## Announcements

### SVDP/Outreach Office Corner

**Christmas Baskets:** This weekend begins the collection of food for Christmas Baskets. A Christmas Basket Program flyer is included in this Bulletin and extra copies will be located at the entrances to the Church. Place your food donations in the baskets at the entrances of the Church or bring them to the Office from 10 am to 11:45am November 19th thru December 12<sup>th</sup>.

**Giving Tree:** Ornaments have been placed on the Giving Trees for various Outreach programs. We provide presents for the homeless at various Home First shelters and for at risk teenagers at the Bill Wilson Center. Some tags are for the 50-60 St. Lucy families who request Christmas Baskets. Other tags are for the 30-40 Giving bags that are distributed to the homeless clients who visit the St. Lucy Outreach Office. Other tags are for the 15-20 St. Lucy Outreach families that have been chosen to participate in our Adopt-A-Family program. Contributions to these programs will be greatly appreciated by the people we are serving.

**Thanksgiving Day Collection:** The collection made at this year's St. Lucy Thanksgiving Day Mass will be used by the SVDP/Outreach volunteers to help feed the hungry (549 adults and 337 children) who come to our Outreach Office. Last year we provided over 400 household bags of food (non-perishable food for a family of 3-4 people for 3-4 days), almost 250 children's food bags with items such as peanut butter and jelly, cereal and crackers and about 300 homeless food bags with items that do not need to be cooked and are easily carried and opened. We thank you in advance for your generosity.

**Fifth Sunday Collection:** Weekend of November 26-27 Four times a year the St. Lucy Conference requests funds for its programs to keep people in their homes. We use these funds to help families and individuals help pay their rent or utilities. Last year we helped 41 families pay their rent and 20 families pay their PG&E bills. We were able to provide \$28,500 for rent and utility assistance thanks to the generosity of St. Lucy parishioners and grants received from the Catholic Community Foundation and the City of Campbell.

### Eucharistic Adoration for Vocation

Let us pray to the Lord that He may bless our Diocese of San Jose by raising up dedicated and generous leaders from our families and friends who will serve Your people as Sisters, Priests, Brothers, Deacons and Lay Ministers. Join us in our Eucharistic Adoration for Vocations every Thursdays, from 3:15--4:15pm, and every first Saturday of the month, from 6:30pm-7:30pm. Also, please email us if you would like to help promote vocations in our parish: [stlucyparishoffice@dsj.org](mailto:stlucyparishoffice@dsj.org)



## Anuncios

### Oficina de Servicios Sociales

**Canastas Navideñas:** Este fin de semana comienza la colecta de alimentos para las Canastas Navideñas. Este Boletín incluye un volante del Programa o habrá volantes adicionales en las entradas de la Iglesia. Coloque sus donaciones de alimentos en las cestas a las entradas de la Iglesia o tráigalas a la Oficina del 19 de noviembre al 12 de diciembre.

**Árbol que Caridad:** Los adornos se han colocado en los árboles. Proporcionamos regalos para varios refugios de Home First y para adolescentes en riesgo en el Centro Bill Wilson. Algunas etiquetas son para las 50-60 familias de Santa Lucia que solicitan Canastas Navideñas. Otras etiquetas son para las bolsas de 30-40 que se distribuyen a los sin hogar que nos visitan. Otras etiquetas son para las 15-20 familias de Santa Lucia que han sido elegidas para participar en nuestro programa Adopte una Familia. Las contribuciones a estos programas serán muy apreciadas por la gente que estamos sirviendo.

**Colecta del Día de Acción de Gracias:** La colecta en la misa del Día de Acción de Gracias de Santa Lucia será utilizada por los voluntarios de la Oficina de Servicios Sociales para ayudar a alimentar a los hambrientos (549 adultos y 337 niños) que vienen a nuestra Oficina. El año pasado se proporcionaron más de 400 bolsas de alimentos para el hogar (comida no perecedera para una familia de 3-4 personas durante 3-4 días), casi 250 bolsas para niños con crema de cacahuete y mermelada, cereales y galletas y alrededor de 300 Bolsas de comida para los sin hogar con artículos que no necesitan ser cocinados y son fácilmente transportados y abiertos. Le agradecemos de antemano por su generosidad.

**Coleta del Quinto Domingo:** del 26 al 27 de noviembre Cuatro veces al año la Oficina de Servicios Sociales de Santa Lucia solicita fondos para sus programas. Utilizamos estos fondos para ayudar a familias e individuos a pagar su renta o utilidades. El año pasado ayudamos a 41 familias a pagar su renta y 20 familias pagan sus cuentas de PG & E. Pudimos proporcionar \$28,500 gracias a la generosidad de los feligreses de Santa Lucia y a las concesiones recibidas de la Fundación de la Comunidad Católica y de la ciudad de Campbell.

### Adoración Eucarística para las Vocaciones

Pidamos al Señor que bendiga a nuestra Diócesis de San José levantando líderes generosos y dedicados de nuestras familias y amigos que servirán a Su pueblo como Hermanas, Sacerdotes, Hermanos, Diáconos y Ministros laicos. Unase a nosotros en nuestra Adoración Eucarística para las Vocaciones todos los jueves, de 3:15 a 4:15pm, y cada primer sábado del mes, de 6:30 pm a 7:30pm.

### OBRA DE LA VIRGEN DE GUADALUPE

Les hacemos una invitación a todas los feligreses de Santa Lucia a participar en la obra de nuestra Madre Virgen de Guadalupe. Las practicas son los jueves y sábados de 7pm a 9pm. Póngase en contacto con Victor Cenicerros al 408-370-0724.



### From the Principal's Office

Dear Parishioners,

“Whoever serves me must follow me; and where I am, my servant also will be. My Father will honor the one who serves me.”

Thanksgiving is a time of giving thanks for what we have and offering our service to others, as Jesus did. The Student Council is collecting food for the parish outreach program sponsored by St. Vincent de Paul. Each grade has been asked to bring certain needed items which will be used to fill Christmas Food Baskets. St. Lucy School students will also participate in a full Day of Service on Nov. 22. Students will be making blankets, for the Linus Project and a local hospital, singing at Corinthian House and Merrill Gardens and making Christmas and Thanksgiving decorations.



Sue Grover,  
Principal

The Corporal Works of Mercy are actions we can perform that extend God's compassion and mercy to those in need. As our students give to others through service, they answer the question, “What would Jesus Do?”

As we celebrate Thanksgiving, how will you share the gifts that God has bestowed on you?

Happy Thanksgiving,  
Sue Grover, Principal

## School Events & Notices



### SCHOOL TOURS

Visit our campus!  
Schedule at (408) 871-8023 or email  
admissions@stlucyschool.org.

### OPEN HOUSES

1/12 (K & Pre-K Parents)  
1/29 Pre-K-8th Family Open House

### Service Collections:

Please drop any items to the school office or the Parish:

- \* 1-2 Yards of neutral colored or children's patterned fleece, which will be used to make and donate Project Linus children's blankets
- \* Used coats, to be donated through the One Warm Coat Agency this winter
- \* Prescription eyeglasses, to be refurbished and donated through the Lions Club



St. Lucy Jr. Girl Scouts and Cub Scouts completed 50 boxes for the Samaritan Purse Charity's Operation Christmas Child. The scouts filled shoe boxes with a variety of useful and fun things and added a note wishing the recipient good wishes.



*Father,  
We praise You for Your Son Jesus,  
Who knew the happiness of  
family and friends,  
And in the love of Your Holy Spirit  
Blessed are you for ever and ever.  
Amen.*



Both St. Lucy Lego Robotics teams recently successfully competed in the First Lego League's Robotics Competition. Team “Bolt Bots 1.0” advanced to the next round of competition in January. We are proud of our future scientists and engineers!



### Dr. Cheryl Vicencio

Dentistry for Children & Adults • General & Cosmetic Dentistry

**(408) 255-2222**

New Patients Welcome  
Most Insurance Plans Accepted 753 Saratoga Avenue



### Kelley Solberg, Realtor®

16185 Los Gatos Blvd., Ste. 205  
Los Gatos, CA 95032  
Cell: 408.464.8629

Knowledge Experience  
Integrity

BRE#01359475

### St. Elizabeth Seton Catholic School

Serving the East Palo Alto Community since 1978

•K-8 •Multi-Ethnic •Interdenominational

70% of Students Receive Tuition Assistance  
Virtually All Graduates Complete High School

85% of Graduates Enroll in College

Sponsors Needed to Continue the Mission

Adopt a Student

Call (650) 326-1258



State Farm Insurance

John Wheeler Agency



Parishioner  
Se Habla Español  
2470 S. Winchester #A  
Campbell, CA  
**408-378-3403**  
john@johnwheelerinsurance.com

For a Special Offer  
Use Promo Code:  
Bulletins



Sign Up Today for Faith, Friendship, & Love

CatholicSingles.com®/BayArea

## Tax Ladyx

Business Start Ups  
Prior Year Returns  
Amendments

Simple To  
Complex  
Tax Issues

"Tax Payers Saved \$\$\$\$  
Amending With Me Including  
Self Prepared Returns"

sallyanneea@taxladyx.com **408-455-8877**

#### WHY IS IT

A man wakes up after sleeping under an ADVERTISED blanket on an ADVERTISED mattress and pulls off ADVERTISED pajamas bathes in an ADVERTISED shower shaves with an ADVERTISED razor brushes his teeth with ADVERTISED toothpaste washes with ADVERTISED soap puts on ADVERTISED clothes drinks a cup of ADVERTISED coffee drives to work in an ADVERTISED car and then . . . . . refuses to ADVERTISE believing it doesn't pay. Later if business is poor he ADVERTISES it for sale.

**WHY IS IT?**

### Pain Relief Chiropractic

Dr. William Holdsworth, DC



Short-Term Care For Your Neck & Back Pain

Accepts M.D. Referrals • Affordable • Insurance Accepted  
Be Seen Today • Walk-Ins Welcome • No Appointment Needed

Member of ChiroTrust® (www.Chiro-Trust.org) • Parishioner

1836 Hamilton Avenue, San Jose, CA 95125

**408-785-0631**

[www.DrWilliamHoldsworthBlog.com](http://www.DrWilliamHoldsworthBlog.com)

### Darling + Fischer

Family Mortuaries  
Since 1936



Campbell - FD898  
408-379-5010

San Jose - FD557  
408-998-2226

Los Gatos - FD940  
408-354-7740

SANA ZGLINSKI, REALTOR  
CENTURY 21 ALPHA  
(408) 644-7671

BUY OR SELL  
EXPERIENCE! HONESTY! INTEGRITY!  
BRE # 01450343

### PROTECTING SENIORS NATIONWIDE

PUSH TALK 24/7 HELP



HOLIDAY SPECIAL

\$19.95\*/Mo. + 1 FREE MONTH

> No Long-Term Contracts

> Price Guarantee > American Made

TOLL FREE: 1-877-801-8608

\*First Three Months

### Saint Margaret Sunday Missal

An ideal companion for personal prayer.



In Stock & Ready to Order Today.  
CALL OR ORDER ONLINE. \$39.95



800-566-6150 • www.wlpmusic.com

Please Cut Out This "Thank You Ad" and Present It The Next Time You Patronize One of Our Advertisers

# Thank You

Thank you for advertising in our church bulletin. I am patronizing your business because of it!



Joe Lima



Sam Campagna



Vince Lima

Lima-Campagna-Alameda Mission Chapel FD-1949  
"San Jose's Premier Funeral Provider"

600 S. 2nd St., San Jose, CA 95112 • 408-288-9188

Serving Our Community



Don Lima



Maria Campagna



Joe Campagna



### MARK A. WATSON, DDS

Parishioner

**356-1166**

catholicmatch®  
California



CatholicMatch.com/myCA

### Catholic Cruises and Tours

Brian or Sally, coordinators

860.399.1785  
CST 2117990-70  
www.CatholicCruisesAndTours.com

## ADVERTISING

He who has a thing to sell and goes and whispers in a well, is not so apt to get the dollars as he who climbs a tree and hollers.

Grow Your Business, Advertise Here.

Support Your Church & Bulletin.

Free professional ad design & my help!



[www.jspaluch.com](http://www.jspaluch.com)

Call Angel

**800.675.5051**

FINDaPARISH.com

Check It Out Today!

The Most Complete Online National Directory of Catholic Parishes

### If You Live Alone You Need LIFEWatch!

24 Hour Protection at HOME and AWAY!

✓ Ambulance Solutions as Low as \$1 a Day!  
✓ Police ✓ Fire  
✓ Friends/Family

FREE Shipping  
FREE Activation  
NO Long Term Contracts



CALL NOW! 800.393.9954

MADE AND MONITORED IN THE USA

LIFEWatchUSA  
PERSONAL CARING SERVICE SINCE 1980

Fall Detectors Also Available

Ask about our AARP discounts

"I have peace of mind... Mom remains independent."

WLP

WORLD LIBRARY PUBLICATIONS

the music and liturgy division of J.S. Paluch Company, Inc.

800-566-6150 • www.wlp.jspaluch.com/13182.htm

### ONE PARISH

An App For Catholics

GROW YOUR FAITH

Download TODAY

Download on the App Store

GET IT ON Google play

ONEPARISH.COM

Parish Info • Donate • Daily Faith